



**56/500 Series**



**58/550 Series**

## Snaplock® Quick Release Clamps

Snaplock® quick release worm drive clamps are good for closed system applications where the clamp must be disengaged to be applied. The swivel-action locking of screw to band makes installation and removal much faster.

### Ideal® 56 Series

Screw: 5/16" hex slotted, plated carbon steel.  
Band: 9/16" band width, 201/301 stainless steel.  
Housing: 201/301 stainless steel.  
Bridge: Plated carbon steel

### Ideal® 58 Series

Screw: 3/8" hex combo slotted, 410 stainless steel.  
Band: 9/16" band width, 201/301 stainless steel.  
Housing: 201/301 stainless steel.  
Bridge: 410 stainless steel.

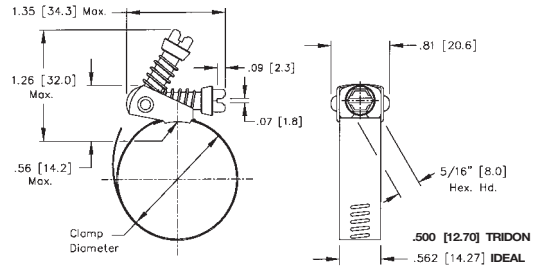
### Tridon® 500 Series

Screw: 5/16" hex slotted, plated carbon steel.  
Band: 1/2" band width, 201/301 stainless steel.  
Housing: 201/301 stainless steel.  
Bridge: 410 stainless steel.

### Tridon® 550 Series

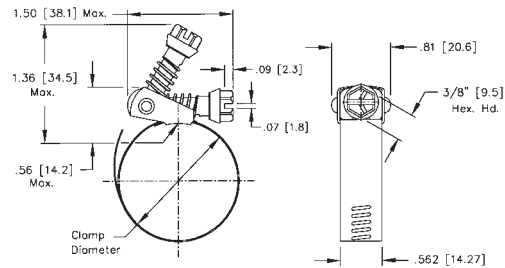
Screw: 5/16" hex slotted, 410 stainless steel.  
Band: 1/2" band width, 201/301 stainless steel.  
Housing: 201/301 stainless steel.  
Bridge: 410 stainless steel.

### 5/16" Hex Head



Dimensions:  
inches [mm]

### 3/8" Hex Head



SNAPLOCK QUICK RELEASE					CLAMPING RANGE					
SAE Sizes	Ideal Part No.	Tridon Part No.	Ideal Part No.	Tridon Part No.	Min. Dia. (in.)	Max. Dia. (in.)	Min. Dia. (mm)	Max. Dia. (mm)	Hose I.D. Min. (in.)	Hose I.D. Max. (in.)
	56	500	58	550						
12	5612	500-012*	5812	550-012*	1/2	1 1/4	13	32	3/8	3/4
20	5620	500-020*	5820	550-020*	3/4	1 3/4	19	44	3/4	1 1/8
24	5624	500-024*	5824	550-024*	1	2	26	51	7/8	1 3/8
28	5628	500-028*	5828	550-028*	1	2 1/4	26	57	7/8	1 5/8
36	5636	500-036*	5836	550-036*	1	2 3/4	26	70	7/8	2
48	5648	500-048*	5848	550-048*	1 1/2	3 1/2	38	89	1 1/2	2 3/4
56	5656	500-056	5856	550-056	1	4	26	101	7/8	3 1/2
72	5672	500-072	5872	550-072	2	5	51	127	2	4 1/2
88	5688	500-088	5888	550-088	2	6	51	152	2	5 1/2
104	56104	500-104	58104	550-104	2 7/8	7	45	178	1 3/4	6 1/2
116	56116	500-116*	58116	550-116*	1 3/4	7 3/4	45	197	1 3/4	7
128	56128	500-128	58128	550-128	2 1/4	8 1/2	45	216	1 3/4	7 1/2
136	56136	500-136*	58136	550-136	1 3/4	9	45	228	1 3/4	8 1/2
152	56152	500-152	58152	550-152	2	10	51	254	2	9 1/2
188	56188	500-188	58188	550-188	2	12 1/4	51	311	2	11 1/2

Clamps are shipped disengaged. Information on special sizes available on request. \*Lead times may vary.

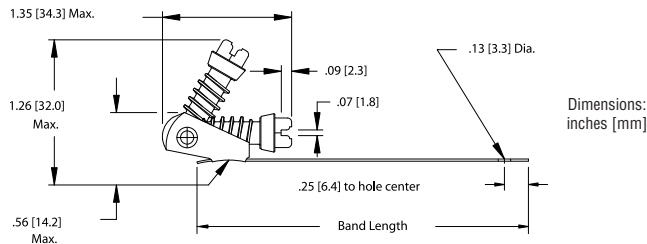
## Two-Piece Snaplock® Clamps

This unique two-part clamp is adaptable to a variety of latching or locking applications where repeated opening and closing is necessary. Holes in the end of each part allow for permanent installation of clamp with rivets or screws.

### Part 1

#### Ideal® 58 (2-pc)/ Tridon® 502 Series

Screw: 5/16" hex-head slotted, plated carbon steel.  
Housing: Stainless steel.



HOUSING and SCREW					
Ideal Part No.	Tridon Part No.	Band Length		Hole Diameter	
58 (2-pc) Series	502 Series	Inches	mm	Inches	mm
5823	502-002	1.86	47.2	0.13	3.3
5825	502-003	1.50	38.1	0.13	3.3
5829	502-004	3.72	94.5	0.13	3.3
5830	502-005	3.63	92.1	0.25	6.4

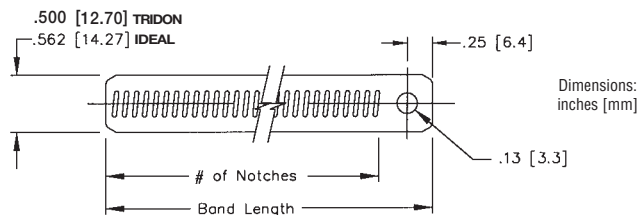
### Part 2

#### Ideal® 62 (2-pc) Series

Band: 9/16" band width, 201/301 stainless steel.

#### Tridon® 503 Series

Band: 1/2" band width, 201/301 stainless steel.



BAND					
Ideal Part No.	Tridon Part No.	Band Length		Hole Diameter	
62 (2-pc) Series	503 Series	Inches	mm	Inches	mm
62647	503-002	4.81	122.2	0.13	3.3
62648	503-003	3.88	98.4	0.13	3.3
62649	503-004	6.50	165.1	0.13	3.3
62650	503-005	4.75	120.7	0.13	3.3
62654	503-006	10.06	255.6	0.13	3.3
62655	503-007	2.00	50.8	0.13	3.3
62656	503-008	6.00	152.4	0.25	6.4

Also available in all zinc-plated, carbon steel. Contact Ideal for details.

### 58/502 Series (Part 1)



### 58/502 Series (Part 2)

## Surelock Quick Engage Clamps

Surelock Quick Engage worm drive clamps have a bind-free, pull-through design for fast installation. Captured screw design for quick fastening and trouble-free tensioning. Extended housing embraces 25% more screw threads than competitive designs.

### 48 Series



#### Ideal® 48 Series

All 300 Marine Grade Stainless Steel.

Screw: 5/16" hex slotted, 300 stainless steel.

Band: 9/16" band width, 300 stainless steel.

Housing: Extended, 300 stainless steel.

### 49 Series



#### Ideal® 49 Series

All 316 Marine Grade Stainless Steel.

Screw: 5/16" hex slotted, 316 stainless steel.

Band: 9/16" band width, 316 stainless steel.

Housing: Extended, 316 stainless steel.

### 54 Series



## Combo-Hex® Clamps

Combo-Hex® clamps are the clamps professional mechanics choose most often. Particularly helpful in hard-to-reach areas, they feature an exclusive, safety-collared, deep-slotted screw design that prevents screwdrivers from slipping and puncturing the hose wall. Combo-Hex clamps can be installed with a screwdriver, nutdriver or socket wrench.

#### Ideal® 54 Series

Stainless Steel and Plated Parts.

Screw: 3/8" safety-collared, hex, deep-slotted, plated carbon steel.

Band: 9/16" band width. 201/301 stainless steel.

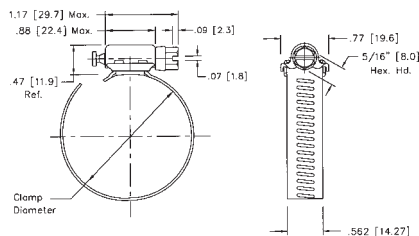
Housing: 201/301 stainless steel.

SURELOCK			CLAMPING RANGE					
SAE Sizes	Ideal Part No.	Ideal Part No.	Min. Dia. (in.)	Max. Dia. (in.)	Min. Dia. (mm)	Max. Dia. (mm)	Hose I.D. Min. (in.)	Hose I.D. Max. (in.)
	<b>48</b>	<b>49</b>						
12	4812	4912*	1/2	1 1/4	13	32	3/8	3/4
20	4820	4920	3/4	1 3/4	19	44	3/4	1 1/8
24	4824	4924*	3/4	2	19	51	3/4	1 3/8
28	4828	4928*	1	2 1/4	26	57	7/8	1 5/8
32	4832	4932*	1	2 1/2	26	63	7/8	1 7/8
36	4836	4936*	7/8	2 3/4	22	70	3/4	2
48	4848	4948*	1	3 1/2	26	89	1	2 3/4
56	4856	4956*	1	4	26	101	1	3 1/2
72	4872	4972*	2	5	51	127	2	4 1/2
80	4880	4980*	2 9/16	5 1/2	65	140	2 1/2	5
88	4888	4988*	2	6	51	152	2	5 1/2
104	48104	49104*	2	7	51	178	2	6 1/2
116	48116	49116*	1 3/4	7 3/4	44	197	1 3/4	7
128	48128	49128*	4 1/4	8 1/2	108	216	4 1/4	8
152	48152	49152*	4	10	102	254	4	9 1/2
180	48180	49180*	7 3/4	11 3/4	197	298	7 1/2	11
188	48188	49188*	6 1/4	12 1/4	159	311	6	11 1/2

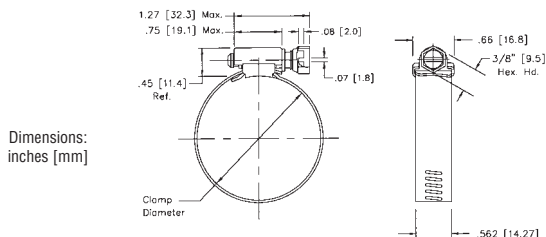
Additional sizes available upon request. \*Lead times may vary.

COMBO-HEX		CLAMPING RANGE					
SAE Sizes	Ideal Part No.	Min. Dia. (in.)	Max. Dia. (in.)	Min. Dia. (mm)	Max. Dia. (mm)	Hose I.D. Min. (in.)	Hose I.D. Max. (in.)
	<b>54</b>						
6	5406	3/8	7/8	10	22	5/16	3/8
8	5408	7/16	1	11	25	5/16	1/2
10	5410	1/2	1 1/16	13	27	3/8	5/8
12	5412	1/2	1 1/4	13	32	3/8	3/4
16	5416	11/16	1 1/2	18	38	3/4	7/8
20	5420	3/4	1 3/4	19	44	3/4	1 1/8
24	5424	1	2	25	51	7/8	1 3/8
28	5428	1 1/4	2 1/4	32	57	1 1/4	1 5/8
32	5432	1 1/2	2 1/2	38	63	1 1/2	1 7/8
36	5436	1 3/4	2 3/4	44	70	1 3/4	2
40	5440	2	3	51	76	2	2 1/4
44	5444	2 1/4	3 1/4	57	82	2 1/4	2 1/2
48	5448	2 1/2	3 1/2	64	89	2 1/4	2 3/4
52	5452	2 3/4	3 3/4	70	95	2 3/4	3
56	5456	3	4	76	101	3	3 1/2

### Surelock



### Combo Hex



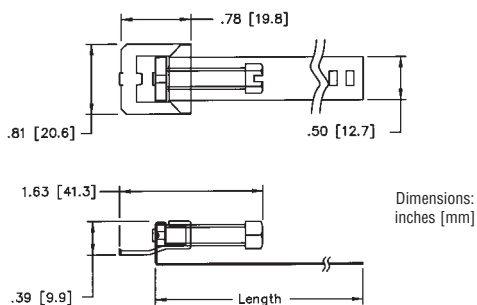
## Lox-On® Clamps

For extra-tough installations. Unique design provides double-locking security and high band tension for high sealing pressures.



### Ideal® 69 Series

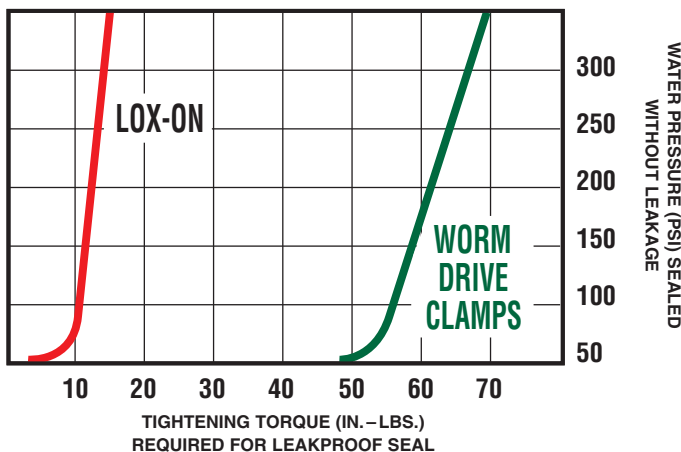
All 300 Series Marine Grade Stainless Steel.  
Screw: 5/16" hex slotted, 300 stainless steel.  
Band: 9/16 band width, 300 stainless steel, with UPC shield.  
Housing: Double locking, 300 stainless steel.



LOX-ON		CLAMPING RANGE					
SAE Sizes	Ideal Part No.	Min. Dia. (in.)	Max. Dia. (in.)	Min. Dia. (mm)	Max. Dia. (mm)	Band Length (in.)	Band Length (mm)
	<b>69</b>						
12	6912	11/16	1 1/4	17	32	4 13/16	122
20	6920	11/16	1 3/4	17	44	6 13/32	163
32	6932	11/16	2 5/8	17	67	8 29/32	226
72	6972	1 3/4	5	44	127	16 5/16	414
104	69104	4	7 1/4	102	184	23 5/16	592

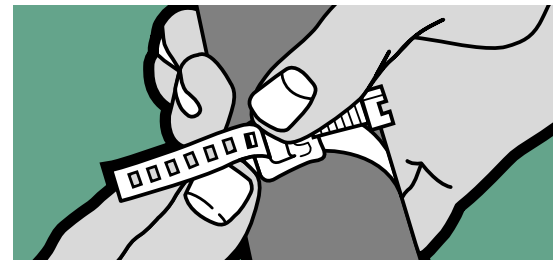
Simplified inventory – just one size No. 6932, will handle from 1/2" through 2" pipe. Lox-On ships flat and disengaged – It's easy to stock, easy to store.

### LOX-ON SAFETY MARGIN

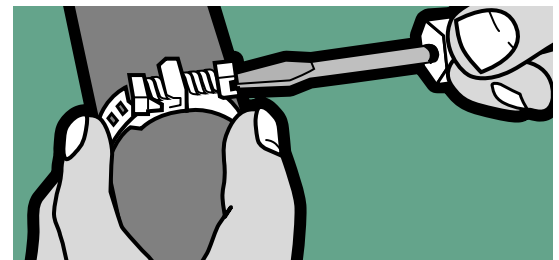


We recommend a minimum of all 300 grade stainless steel clamps for marine applications. For applications directly over galvanized steel, we recommend an intermediate layer of non-conductive material such as vinyl electrical tape.

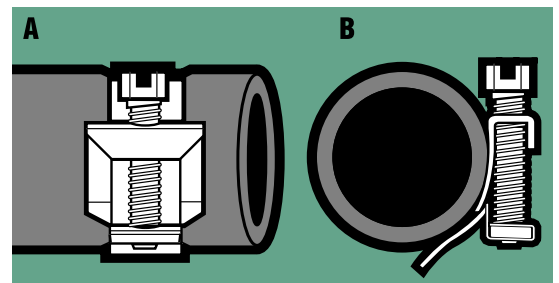
### 69 Series



Insert band through buckle from underneath. Pull band snug about pipe and engage serration of band on inner lug.



Bend band at 90° from buckle and engage outer tooth with serration. Hold band down and tighten screw.



A. Illustrates Lox-On compression at only 20 in.-lbs. tightening torque on 160 PSI (high-density) polyethylene pipe. This is half the torque generally applied to conventional worm drive clamps.

B. Patented, offset buckle provides full circle seal. Lox-On conforms to the contour of the pipe.

## IDEAL® Turn-Key® Clamps

Innovative design installs with a simple hand twist, no tools required. It's easy to remove and replace. Pull off the screw cap for a tamper-resistant connection.

### Common Applications by Size

Automotive Hose Clamps: Heater = SAE sizes No. 12 or 20

Radiator = SAE sizes No. 28 or 36

Garden Hose Clamps: SAE size No. 12

R.V. Sewer Hose Clamps: SAE size No. 48

Dryer Vent Hose Clamps: SAE size No. 64

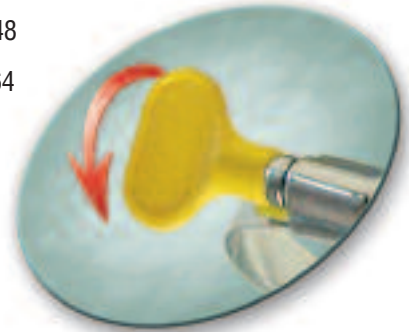
### Material Specifications

Injection molded thermoplastic screw cap, removable and reusable.

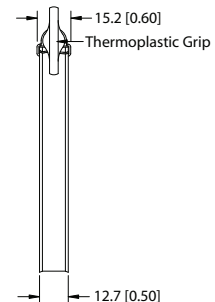
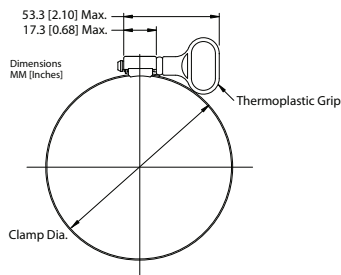
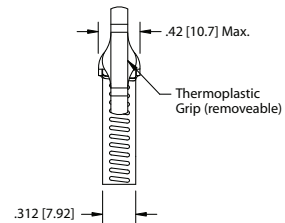
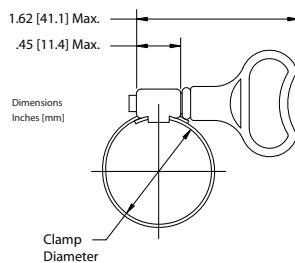
Screw: Plated carbon steel.

Band: 1/2" band width, stainless steel.

Housing: Stainless steel.



TURN-KEY			CLAMPING RANGE			
Part No.	SAE Sizes	Color	Min. Dia. (in.)	Max. Dia. (in.)	Min. Dia. (mm)	Max. Dia. (mm)
6Y004	Mini size 4	Yellow	1/4	5/8	6	16
6Y006	Mini size 6	Yellow	3/8	7/8	10	22
5Y012	12	Yellow	1/2	1 1/4	13	32
5Y020	20	Yellow	3/4	1 3/4	19	44
5Y028	28	Yellow	1 1/4	2 1/4	32	57
5Y036	36	Yellow	1 3/4	2 3/4	44	70
5Y048	48	Yellow	2 1/2	3 1/2	64	114
5Y064	64	Yellow	2 1/2	3 1/2	64	114

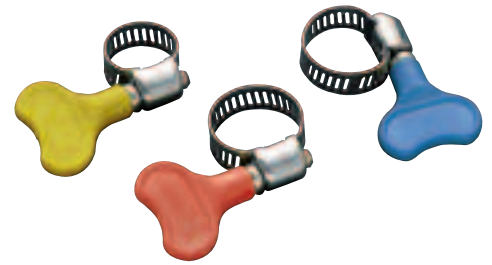


TURN-KEY VISI-PAKS		
Part No.	Assortment in Visi-Pak™	Color
6Y004v	Mini 4 and Mini 6	Yellow
6R004v	Mini 4 and Mini 6	Red
6B004v	Mini 4 and Mini 6	Blue
5Y012v	Two 12's	Yellow
5R012v	Two 12's	Red
5B012v	Two 12's	Blue
5Y020v	Two 20's	Yellow
5R020v	Two 20's	Red
5B020v	Two 20's	Blue
5Y028v	Two 28's	Yellow
5R028v	Two 28's	Red
5B028v	Two 28's	Blue
5Y036v	Two 36's	Yellow
5R036v	Two 36's	Red
5B036v	Two 36's	Blue
5Y048v*	Two 48's	Yellow
5Y064v**	Two 64's	Yellow
5Y001v	Six, Sizes 4-36	Yellow
5R001v	Six, Sizes 4-36	Red
5B001v	Six, Sizes 4-36	Blue
9048Y***	Fifty, 48's	Yellow

\* RV Sewer Hose Packaging

\*\* Dryer Vent Packaging

\*\*\* RV Sewer Hose Bucket of Clamps



We recommend a minimum of all 300 grade stainless steel clamps for marine applications. For applications directly over galvanized steel, we recommend an intermediate layer of non-conductive material such as vinyl electrical tape.



**59 Series**

## IDEAL® Wraplock® Clamps

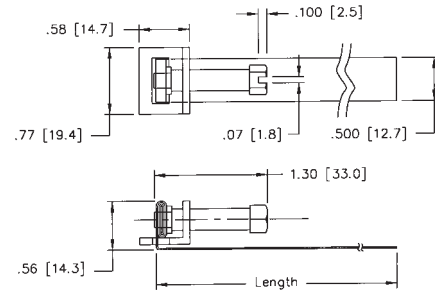
Retaining clamp conforms to any shape. Made in one piece.

### Ideal® 59 Series

Screw: 5/16" hex, plated steel.

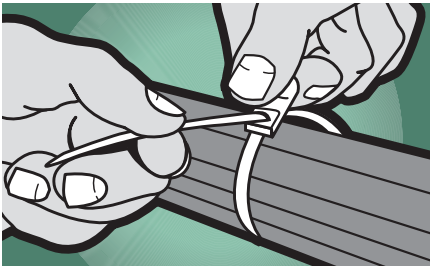
Band: 1/2" band width, galvanized steel.

Buckle: Plated steel.



WRAPLOCK		CLAMPING RANGE					
SAE Sizes	Ideal Part No.	Min. Dia. (in.)	Max. Dia. (in.)	Min. Dia. (mm)	Max. Dia. (mm)	Band Length (in.)	Band Length (mm)
	<b>59</b>						
12	5912	1	3 1/2	25	89	12	305
15	5915	1	4 1/2	25	114	15	381
18	5918	1	5	25	127	18	457
24	5924	1	7	25	178	24	610
30	5930	1	9	25	229	30	762
48	5948	1	14 1/2	25	368	48	1219

**665 Series**



## IDEAL® Nylon Cable Ties

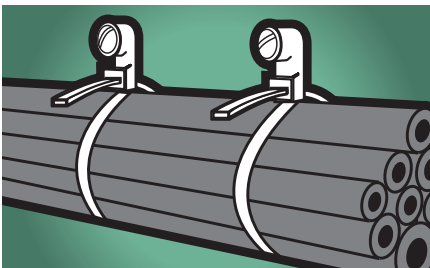
One piece 6/6 nylon for tying, bundling and positioning in industrial, PHAC, automotive and marine applications. Resistant to corrosion and fungus. Installs easily with or without tools.

### Ideal® 665 Series

Self-locking easy install. Corrosion and fungus resistant. Tapered tips slip under and around cables. Flexible nylon conforms readily to most shapes. Uniform serrations along the tie aid "pull-through" to ready for final tensioning and cut off for a neat, tight harness.

NYLON CABLE TIES		CLAMPING RANGE				Min. Tensile Strength	Applicable Mil. Spec.
Ideal Part No.	Min. Dia. (in.)	Max. Dia. (in.)	Min. Dia. (mm)	Max. Dia. (mm)			
<b>665</b>							
66501	1/16	1	1.6	25.4	18 lbs.	MS3367-4	
66502	1/16	1 1/4	1.6	31.7	30 lbs.	MS3367-5	
66505	1/16	1 3/4	1.6	44.4	50 lbs.	MS3367-1	
66506	1/16	3	1.6	76.2	50 lbs.	MS3367-7	
66507	1/16	4	1.6	101.6	50 lbs.	MS3367-2	
66509	3/16	4	4.8	101.6	120 lbs.	MS3367-3	
66510	3/16	6	4.8	152.4	175 lbs.	MS3367-3	
66511	3/16	9	4.8	228.6	175 lbs.	MS3367-6	
66512	3/16	13	4.8	330.2	175 lbs.	None	

**666 Series**



### Ideal® 666 Series

Self-locking easy install with Mounting heads, good for cable mounting. Corrosion and fungus resistant. Tapered tips slip under and around cables. Flexible nylon conforms readily to most shapes. Uniform serrations along the tie aid "pull-through" to ready for final tensioning and cut off for a neat, tight harness. Once ties are installed, pass a screw, bolt or rivet through the mounting head for bundling and mounting in one unit.

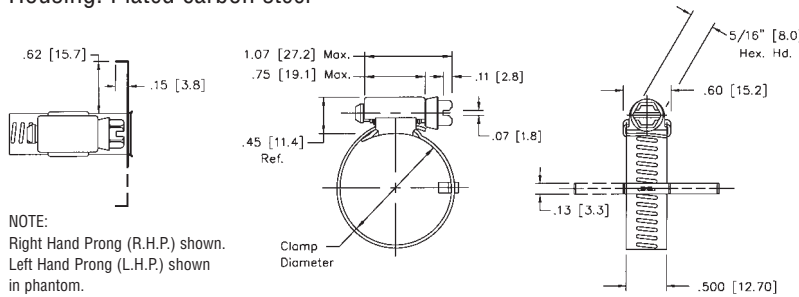
NYLON CABLE TIES		CLAMPING RANGE				Min. Tensile Strength	Mounting Hole Size (in.)
Ideal Part No.	Min. Dia. (in.)	Max. Dia. (in.)	Min. Dia. (mm)	Max. Dia. (mm)			
<b>666</b>							
6604	1/16	1 3/4	1.6	25.4	50 lbs.	0.208	
6605	1/16	4	1.6	31.7	50 lbs.	0.208	
6606	3/16	4	1.6	44.4	120 lbs.	0.250	

## AC Clamps

AC clamps have stainless steel locator bar to aid in positioning of clamps over auto air conditioning fitting.

### Ideal® 62 Series / Tridon® Automatic AC 684 Series

Locator Bar: Stainless steel.  
Screw: 5/16" hex, plated carbon steel.  
Band: 1/2" band width, stainless steel.  
Housing: Plated carbon steel



NOTE:  
Right Hand Prong (R.H.P.) shown.  
Left Hand Prong (L.H.P.) shown  
in phantom.

AC CLAMPS			CLAMPING RANGE			
SAE Sizes	Ideal Part No.	Tridon Part No.	Min. Dia. (in.)	Max. Dia. (in.)	Min. Dia. (mm)	Max. Dia. (mm)
	<b>62</b>	<b>684</b>				
8	6274	684-008	7/16	1	11	25
12	6277	684-012	1/2	1 1/4	13	32

### 62/684 Series

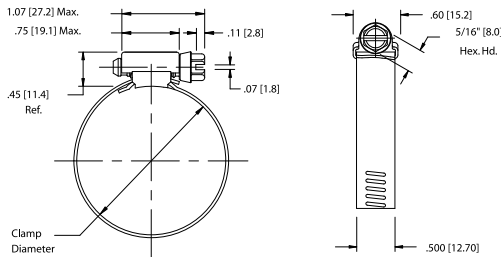


## Military Worm Drive Clamps

Military Worm Drive Clamps are manufactured to military specification MS35842 and AA-52506B.

### Ideal® 62MS Series / Tridon® 632 Series

Screw: 5/16" hex-head, stainless steel.  
Band: 1/2" band width, 201/301 stainless steel.  
Housing: 201/301 stainless steel.



MILITARY SPEC CLAMPS			CLAMPING RANGE			
SAE Sizes	Ideal Part No.	Tridon Part No.	Min. Dia. (in.)	Max. Dia. (in.)	Min. Dia. (mm)	Max. Dia. (mm)
	<b>62MS</b>	<b>632</b>				
6	6210	632-006	3/8	7/8	10	22
12	6211	632-012	1/2	1 1/4	13	32
24	6212	632-024	1	2	26	51
36	6213	632-036	1 3/4	2 3/4	44	70
48	6214	632-048	9/16	3 1/2	65	89
60	6215	632-060	5/16	4 1/4	84	108
104	6216	632-104*	4	7	102	178

\* Non-stocking item

### 62MS/632 Series





## 61 Series



## 61001

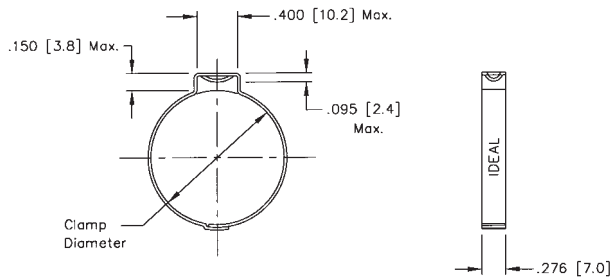


## Single-Ear Pinch / Crimp Clamps

Pinch clamps are designed to fit most popular polyethylene and polybutylene water service lines, and are perfect for sprinkler systems, irrigation systems and most other low-pressure applications.

### Ideal® 61 Series

- Marine Grade Clamps
- All 300 stainless steel for excellent corrosion resistance
- Welded construction for superior strength
- Easy installation
- Permanent, tamper-proof 360° seal
- Compatible with most clinching tools



## Accessories

### Crimp Clamp Tool

Part No. 61001 – Use to install or remove pinch / crimp clamps.

### How to determine proper pinch/climp clamp size:

Measure actual outside diameter (O.D.) of the hose on the fitting. Select the nominal size clamp nearest to that size, but always larger than the O.D. of the hose on the fitting.

PINCH CLAMPS	CLAMPING RANGE					
	Ideal Part No.	Nominal Diameter	Min. Dia. (in.)	Max. Dia. (in.)	Min. Dia. (mm)	Max. Dia. (mm)
<b>61</b>						
61198		3/4	0.669	0.779	17	20
61210		13/16	0.716	0.827	18	21
61256		1	0.898	1.008	23	25
61271		1 1/16	0.945	1.067	24	27
61316		1 1/4	1.122	1.244	29	31
61331		1 5/16	1.181	1.303	30	33
61346		1 3/8	1.240	1.362	32	34
61410		1 5/8	1.492	1.614	38	41
61425		1 11/16	1.551	1.673	40	42
61485		1 7/8	1.787	1.909	46	48

## IDEAL® Flexible Hose Clamp Driver

Stop using that old, rigid nut driver and add some flexibility to your work! The flexible shaft and slippless grip provide 90-degree work access and are best in tight spaces such as compact car and boat engines, as well as plumbing repair applications. The socket fits mini and standard hose clamp screw heads. Just flip the socket for the desired size of 1/4" or 5/16" hex.

**Part No. 9999V** - Flexible Hose Clamp Driver

## Accessories

### IDEAL® Flexible Driver Socket Replacements

Our convenient replacement socket set includes: Two - 1/4" x 5/16" and Two - 5/16" x 3/8" for even greater versatility.

**Part No. 8001V** – Flexible Driver Socket Replacements

## PowerGrip™ SB 46 Series

PowerGrip shrink band clamps are made of heat-sensitive thermo-plastic with a memory that prevents them from over-tightening or under-tightening. Shrinks on with a heat gun. They are environmentally friendly, virtually eliminating antifreeze leaks and groundwater contamination. Heat gun, nozzles, removal tool and replacement blades also available.

POWERGRIP		CLAMPING RANGE		
Description	Ideal Part No.	Nominal Hose ID	Min. Dia. (in.)	Max. Dia. (in.)
SB15	46015	1/4	1/2	11/16
SB19	46019	3/8	11/16	13/16
SB22	46022	1/2	13/16	15/16
SB25	46025	5/8	15/16	1 1/16
SB29	46029	3/4	1 1/16	1 3/16
SB34	46034	1	1 3/16	1 1/2
SB41	46041	1 1/4	1 1/2	1 3/4
SB48	46048	1 1/2	1 3/4	2
SB54	46054	1 3/4	2	2 1/4
SB60	46060	2	2 1/4	2 1/2
SB67	46067	2 1/4	2 1/2	2 3/4
SB73	46073	2 1/2	2 3/4	3
SB79	46079	2 3/4	3	3 1/4
SB86	46086	3	3 1/4	3 1/2
SB90	46090	3 1/8	3 1/2	3 5/8

## Accessories

**Part No. 46001**  
Heat Gun & Attachments

**Part No. 46004**  
Removal Tool



**8001V**



**9999V**

**46 Series**



## P-Clips



## IDEAL® P-Clips

P-Clips are optimal for attaching and retaining hoses, pipes, cables, ducts and lines. Rubber coating and rounded tips prevent damage to soft hoses. Metal band retains shape and flexes without releasing its hold.

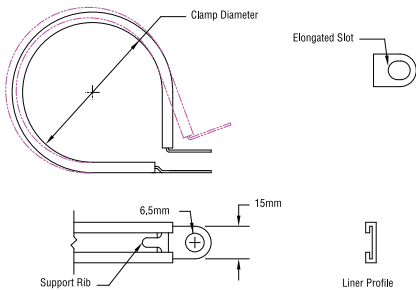
### 80002 Series

15mm band width  
6mm hole diameter  
Rubber-coated steel  
Rounded tips

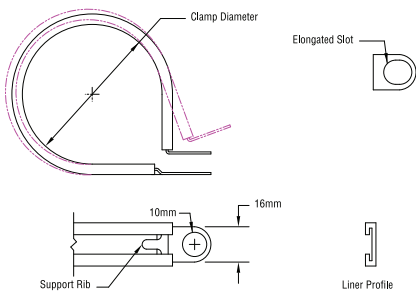
### 80003 Series

16mm band width  
10mm hole diameter  
Rubber-coated steel  
Rounded tips

### 80002 Series



### 80003 Series



SIZING	CLAMPING RANGE
Ideal Part No.	Dia. Closed (mm)
80002 0004	4
80002 0006	6
80002 0009	9
80002 0010	10
80002 0012	12
80002 0013	13
80002 0015	15
80002 0016	16
80002 0018	18
80002 0019	19
80002 0020	20
80002 0022	22
80002 0025	25
80002 0027	27
80002 0029	29
80002 0032	32
80002 0035	35
80002 0038	38
80002 0040	40
80002 0045	45
80002 0048	48
80002 0050	50
80002 0055	55
80002 0057	57
80002 0060	60
80002 0064	64
80002 0066	66
80002 0070	70

SIZING	CLAMPING RANGE
Ideal Part No.	Dia. Closed (mm)
80003 0008	8
80003 0009	9
80003 0010	10
80003 0013	13
80003 0015	15
80003 0016	16
80003 0018	18
80003 0019	19
80003 0020	20
80003 0022	22
80003 0025	25
80003 0027	27
80003 0029	29
80003 0032	32
80003 0035	35
80003 0038	38
80003 0051	51